

Technical Data Sheet



ciel

473nm blue CW DPSS laser

100 - 350 mW

The ciel laser system is at the cutting edge of DPSS laser technology. The innovative architecture generates up to 350 mW of blue CW at 473 nm. The combination of high power at this wavelength, good collimation and a compact package make this a unique product.

Specifications

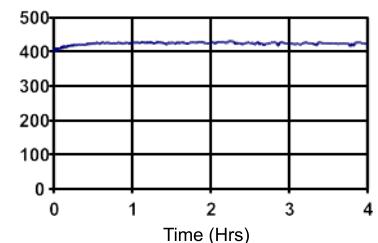
power	100, 250, 350 mW
wavelength	473 nm
beam size	1.4 mm
band width	< 60 GHz
spatial mode	TEM ₀₀
divergence	0.6 mrad
M-squared	1.3
power stability	< 3.0 % rms*
RMS noise	< 5.0 % rms
noise bandwidth	1 Hz to 6 MHz
polarisation ratio	100:1
polarisation direction	horizontal
beam angle	1 mrad**
operating temperature	15 - 35 deg C
head weight	1.3 kg
umbilical length	1.5 m
warm-up time	15 min

* test duration 8 hrs

** tolerance relative to head orientation

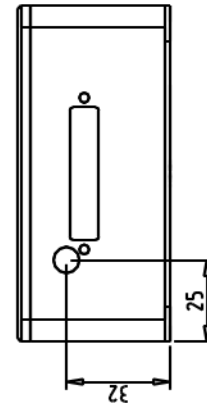
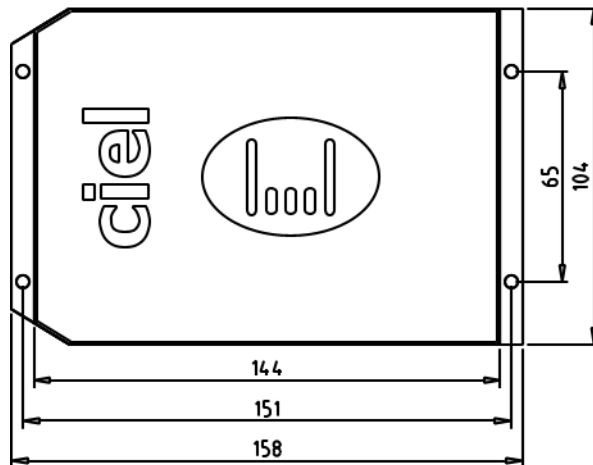
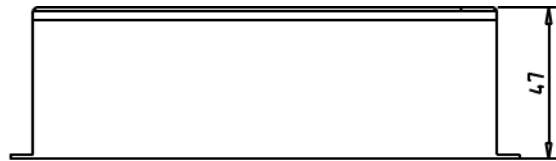
Features

compact design
zero stress,
permanently aligned cavity
hermetically sealed
OEM power supply available
extended warranty available
single phase mains driven
diode 18,000 hrs MTBF
direct modulation upto 30kHz
high brightness beam
RS232 control



A standard power test shows an initial warm-up period followed by a sustained, stable 473nm output at >400 mW.

Technical Data Sheet



Typical Applications

laser doppler anemometry
laser display
biomedical imaging

PSU options

mpc6000
smd6000



Allow 100mm clearance at rear for bend radius of umbilical.
Drawings not to scale.

Laser Quantum has a policy of continuous improvement, therefore specifications are subject to change without notice.

Laser Quantum's scientific and industrial lasers are certified to comply with:
IEC 60825 and Federal regulations (21 CFR - subchapter J) as administered by CDRH on shipments ordered after August 2 1976.

Copyright © 2006 [Laser Quantum Ltd]. All Rights Reserved.