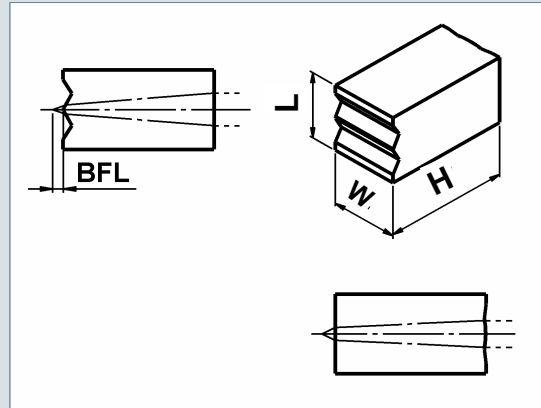


Multi-mode Collimator (O/D) (9003.503) / (9003.504)



General Description: Collimator for multi-mode single emitters.

Specification Data

Material	S-TIH53 (Ohara)
Length (L)	2.00 +/- 0.05 mm
Width (W)	2.00 +/- 0.05 mm
Height (H)	3.705 +/- 0.01 mm
Clear aperture	0.75 x 0.75 mm ²
Surface quality	$\lambda/4$ @ 633 nm (typically)
Refractive index n @ 808 nm	1.823
Effective focal length EFL for slow axis @ 808 nm	2.20 mm
Back focal length BFL @ 808 nm	0.13 mm
Numerical aperture	FA: 0.7 SA: 0.1 (for emitter size of 350 μ m)
Standard coating	AR790-990 nm
Transmission	> 99%
Fast Axis power within an angle of +/- 7.5 mrad (O)	> 70 %
Slow Axis power within an angle of +/- 2.2 mrad (O)*	> 70 %
Fast Axis power within an angle of +/- 7.5 mrad (D)	> 85 %
Slow Axis power within an angle of +/- 2.2 mrad (D)*	> 85 %
Options	Customized coating

* Slow axis data are given as measured with a single-mode emitter. With a multi-mode emitter, additional slow axis divergence is observed. Typical additional slow axis divergence is about +/- 20 mrad per 100 μ m emitter width. The maximum emitter width is about 350 μ m.

Copyright © 2005 LIMO GmbH. All rights reserved. All LIMO products are patent pending. Subject to change without notice. 2007-09-24 Vs. 2.0