

Technical Data Sheet

1 - 2 W



excel

532nm high power, low divergence laser

The excel produces a high power green beam at up to 2 Watts, while maintaining a very low divergence. The ruggedised design allows it to operate equally as well in remote, adverse environments as it does on the laboratory bench.

Specifications

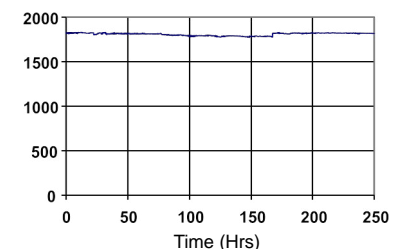
power	1, 1.5, 2 Watts
wavelength	532 nm
beam size	1.8 mm
spatial mode	TEM ₀₀
bandwidth	30 GHz
divergence	0.5 mrad
M-squared	2
power stability	< 3.0 % rms*
RMS noise	3.0 %
noise bandwidth	1 Hz to 6 MHz
polarisation ratio	100:1
polarisation direction	horizontal
coherence length	1 cm
beam angle	1 mrad**
operating temperature	10 - 40 deg C
head weight	1.3 kg
umbilical length	1.5 m
warm-up time	10 min

* test duration 8 hrs

** tolerance relative to head orientation

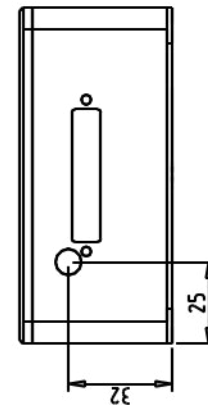
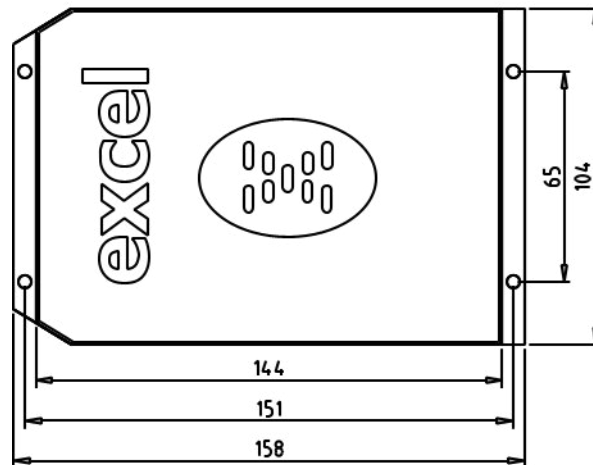
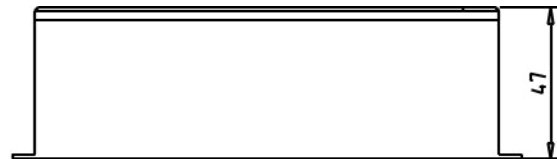
Features

compact design
zero stress,
permanently aligned cavity
hermetically sealed
scientific power supply available
extended warranty available
single phase mains driven
diode 18,000 hours MTBF
direct modulation upto 30 kHz
high brightness
RS232 control



A standard power test on a 1500 mW spec system exhibiting stability < 1% rms and noise < 0.8% rms.

Technical Data Sheet

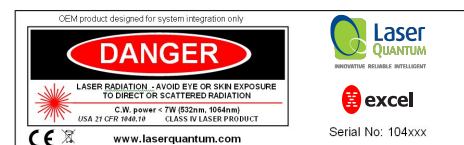


Typical Applications

optical pumping
PIV
biomedical imaging

PSU options

smd6000
mpc6000



Allow 100mm clearance at rear for bend radius of umbilical.
Drawings not to scale.

Laser Quantum has a policy of continuous improvement, therefore specifications are subject to change without notice.

Laser Quantum's scientific and industrial lasers are certified to comply with:
IEC 60825 and Federal regulations (21 CFR - subchapter J) as administered by CDRH on shipments ordered after August 2 1976.

Copyright © 2006 [Laser Quantum Ltd]. All Rights Reserved.