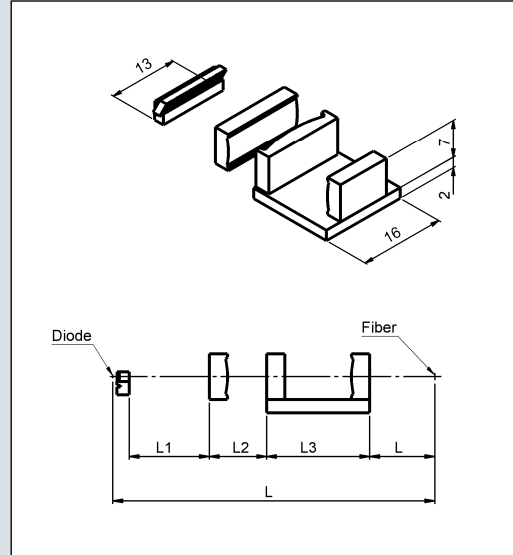
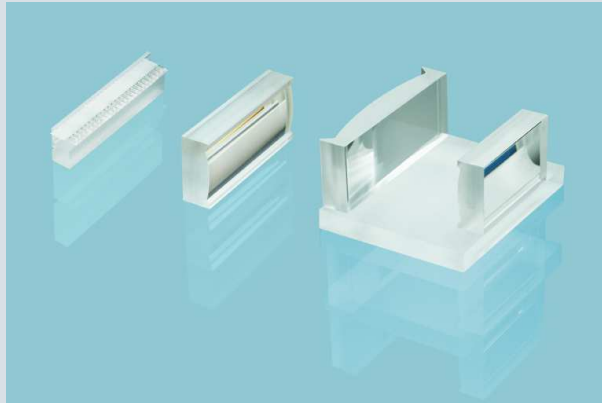


BTS-HOC 200-400 two parts (1401.607)



General Description: Module consisting of Beam Transformation System (BTS-200/400) and Hybrid Optical Chip (HOC) for fiber coupling of diode laser bars with 24 emitters: emitter size up to 200 μm , pitch 400 μm . The BTS consists of a FAC286 fast axis collimation lens, a diagonal lens array for rotating the beams by 90° and a bottom tab for mounting. The HOC has a separate cylindrical lens for vertical collimation and two lenses on a base plate for anamorphic focussing into the fiber.

Specification Data

Fibre core diameter	400 μm
Fibre NA	0.22
Numerical aperture	FA: 0.5 SA: 0.06
Standard coating	AR790-990 nm
Transmission	> 95%
Efficiency	> 70% power (within a spot diameter of 400 μm)
Distance from diode to fiber	L=51.6 mm (L1=12.3 mm; L2= 8.8 mm; L3=15.85 mm; L4=12.7 mm)
Width	16 mm
Height	9 mm
Option	Customized coating

Copyright © 2005 LIMO GmbH. All rights reserved. All LIMO products are patent pending. Subject to change without notice. 2007-08-07 Vs. 2.0